

## Configuration Overview | 1.1.0 / 2023.10

### ALEXA 35 - Production Sets

#### ALEXA 35 Production Set (19mm Studio), [K0.0048869](#)

includes:  
 K1.0039373 1x ALEXA 35 camera body  
 10.0043678 1x ALEXA 35 Cine License  
 K2.0018983 1x ARRI LPL Mount (LBUS)  
 K2.0016936 1x ARRI PL-to-LPL Adapter  
 K2.0034180 1x Balance Utility Dovetail BUD-1  
 K2.0023751 1x B-Mount Battery Adapter  
 K2.0020916 1x Multi Viewfinder MVF-2  
 KK.0048851 1x Camera Control Monitor CCM-1 Set  
 K2.0042857 2x Cable VF Right Angle (0.5m/1.5ft)  
 K2.75007.0 1x Camera Power Cable Straight 2m/6.6in KC-50  
 K2.0024101 1x Power Distribution Module PDM-1  
 KK.0041533 1x Production Support Set - Top  
 KK.0041534 1x Production Support Set - Side  
 KK.0041535 1x Production Support Set - Bottom (19mm)  
 K2.0024130 2x CODEX Compact Drive 1TB (CA08-1024)  
 K2.0023447 1x CODEX Compact Drive 2TB (CB16-2048)



or and

#### ALEXA 35 Production Set (15mm Studio), [K0.0048868](#)

includes:  
 K1.0039373 1x ALEXA 35 camera body  
 10.0043678 1x ALEXA 35 Cine License  
 K2.0018983 1x ARRI LPL Mount (LBUS)  
 K2.0016936 1x ARRI PL-to-LPL Adapter  
 K2.0034180 1x Balance Utility Dovetail BUD-1  
 K2.0023751 1x B-Mount Battery Adapter  
 K2.0020916 1x Multi Viewfinder MVF-2  
 KK.0048851 1x Camera Control Monitor CCM-1 Set  
 K2.0042857 2x Cable VF Right Angle (0.5m/1.5ft)  
 K2.75007.0 1x Camera Power Cable Straight 2m/6.6in KC-50  
 K2.0024101 1x Power Distribution Module PDM-1  
 KK.0041533 1x Production Support Set - Top  
 KK.0041534 1x Production Support Set - Side  
 KK.0041536 1x Production Support Set - Bottom (15mm)  
 K2.0024130 2x CODEX Compact Drive 1TB (CA08-1024)  
 K2.0023447 1x CODEX Compact Drive 2TB (CB16-2048)



#### ALEXA 35 Lightweight Expansion Set, [KK.0041530](#)

includes:  
 K2.0034179 1x Universal Adapter Plate UAP-3  
 K2.0024066 1x Lightweight Camera Handle LCH-1  
 K2.0034554 1x Balance Harness Adapter BHA-1  
 K2.0023948 1x Lightweight Support LWS-6  
 K2.0024745 1x Bridge Plate Adapter BPA-6  
 K2.0024161 1x Compact Shoulder Pad CSP-2  
 K2.0006186 1x Rod Mounting Bracket RMB-3  
 K2.0013302 1x Viewfinder Cross Pipe



### ALEXA 35 - compatible products



**CODEX Compact Drive 2TB)**  
[K2.0023447](#)  
**CODEX Compact Drive set 3x2TB**  
[K0.0040251](#)  
**CODEX Compact Drive set 6x2TB**  
[KK.0040353](#)



**CODEX Compact Drive 1TB**  
[K2.0024130](#)  
**CODEX Compact Drive set 3x1TB**  
[K0.0024596](#)  
**CODEX Compact Drive set 6x1TB**  
[KK.0024370](#)  
**CODEX Compact Drive set 12x1TB**  
[K0.0048298](#)



**Codex Compact Drive Reader (USB-C),** [K2.0024134](#)  
 (CODEX# CDX.0001005)



**CODEX Compact Drive Dock (TB3),** [K2.0034320](#)  
 (CODEX# CDX.0001007)



**Transcend JF890S USB Flash Drive 64GB,**  
 K2.0043663  
 (spare, incl. with camera)



**Hi-5 Hand Unit Body Naked,** [K2.0037280](#)



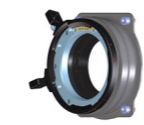
**Audio Extension Module AEM-1**  
[K2.0023750](#)



**Power Distribution Module PDM-1**  
[K2.0024101](#)



**ARRI EF Mount (LBUS),**  
[K2.0019965](#)



**ARRI PL Mount (LBUS)**  
 K2.0042651



**ARRI PL Mount (Hirose)**  
 K2.0042652



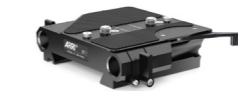
**Center Camera Handle CCH-2,** [K2.73002.0](#)



**Bicycle Grip Adapter BGA-2** [K2.0036623](#)



**Bridge Plate BP-8**  
 19 mm, [K2.0031436](#)



**Bridge Plate BP-9**  
 15 mm, [K2.0031435](#)



**Bottom Dovetail Plate**  
 300mm/12in, [K2.0015896](#)



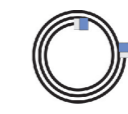
**ALEXA Mini LF Audio connector with cable,**  
 K2.0023988



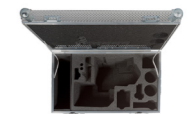
**ALEXA Mini Viewfinder Bracket MVB-1,** [K2.0006140](#)



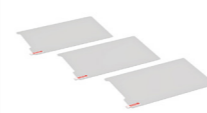
**ARRI Power Supply Light 24V,** [K2.0034493](#)



**Ethernet Cable 3m KC-153-S,**  
[K2.72021.0](#)



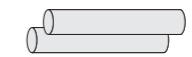
**Case for ALEXA 35,**  
[K2.0040234](#)



**CCM-1 Screen Protector Clear (3 pieces, spare),**  
[K2.0048986](#)



**CCM-1 Foldable Sunhood (Spare),** [K2.0048983](#)



**19 mm Studio Rods**

540 mm, [K2.72028.0](#) stainless steel  
 440 mm, [K2.0001022](#) stainless steel  
 340 mm, [K2.66269.0](#) stainless steel, lightweight  
 240 mm, [K2.66270.0](#) stainless steel, lightweight  
 150 mm, [K2.0016090](#) stainless steel, lightweight  
 90 mm, [K2.0016088](#) stainless steel, lightweight

**Single Support Rods 540 mm,** K2.0014959, carbon fibre, black  
**Single Support Rods 340 mm,** K2.0014954, carbon fibre, black

### ALEXA 35 - Lightweight Sets

#### ALEXA 35 Lightweight Set, [K0.0048867](#)

includes:  
 K1.0039373 1x ALEXA 35 camera body  
 10.0043678 1x ALEXA 35 Cine License  
 K2.0018983 1x ARRI LPL Mount (LBUS)  
 K2.0016936 1x ARRI PL-to-LPL Adapter  
 K2.0034180 1x Balance Utility Dovetail BUD-1  
 K2.0023751 1x B-Mount Battery Adapter  
 K2.0020916 1x Multi Viewfinder MVF-2  
 KK.0048851 1x Camera Control Monitor CCM-1 Set  
 K2.0042857 2x Cable VF Right Angle (0.5m/1.5ft)  
 K2.75007.0 1x Camera Power Cable Straight 2m/6.6in KC-50  
 KK.0041537 1x Lightweight Support Set - Top  
 KK.0041538 1x Lightweight Support Set - Side  
 KK.0041539 1x Lightweight Support Set - Bottom  
 K2.0024130 2x CODEX Compact Drive 1TB (CA08-1024)  
 K2.0023447 1x CODEX Compact Drive 2TB (CB16-2048)



and

#### ALEXA 35 Production Expansion Set (15mm), [K0.0043085](#) ALEXA 35 Production Expansion Set (19mm), [K0.0043086](#)

includes:  
 K2.0024101 1x Power Distribution Module PDM-1  
 K2.0034178 1x Low Mode Support LMS-4  
 K2.0023519 1x Center Camera Handle CCH-5  
 K2.0033859 1x Viewfinder Mounting Bracket VMB-5  
 K2.0047906 1x Square Accessory Sleeve SAS-2  
 K2.0034182 1x Articulated Mounting Plate AMP-1  
**either** K2.0023836 1x Compact Bridge Plate CBP-6 (15mm)  
**or** K2.0023549 1x Compact Bridge Plate CBP-5 (19mm)  
 K2.0015896 1x Bottom Dovetail Plate 300mm/12in



and