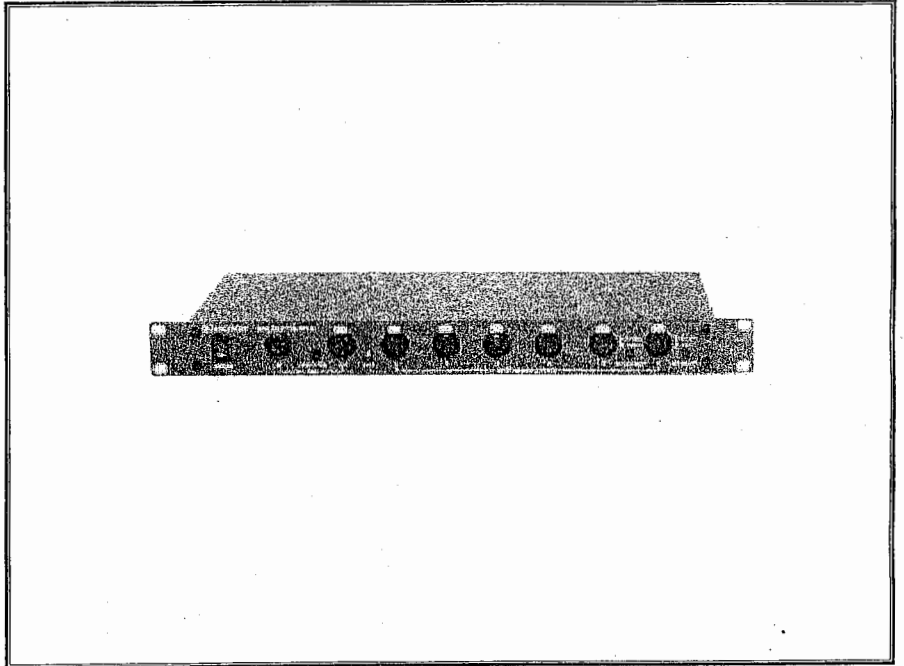


SPLITTER SP-142



USER'S MANUAL

 **ELECTRON**

Introduction

The DMX SPLITTER produced by ELECTRON is a quality product which is expected to give many years of trouble free service.

The SPLITTER is configured with one 5pin XLR input with terminate on switch and LED, one 5pin XLR output to connect other splitters in daisy chain, Data LED, four optically isolated (standard DMX) 5pin XLR outputs and two optically isolated 3pin XLR outputs with reverse polarity buttons. The internal PCB carries spare output ICs for fast emergency service. The Splitter is designed to be mounted on a 19" rack, but it can also be used as a desktop unit.

ELECTRON would like to thank you for choosing the SP-142 SPLITTER, the ideal tool for splitting and buffering the DMX-512 signal.



Precautions and Operation Notes

- Please, read this instruction manual very carefully.
- In case that something is not clear enough in this manual, please contact your local supplier.
- In case you have any doubt about the wiring connections or the operating instructions of this device, please contact your supplier or a specialist.
- This is a Class-I Splitter and should be grounded (earth wire).
- The area where the Splitter is located should never get wet.
- The whole installation area should not have high ambient humidity.
- Do not operate this Splitter in places where the ambient temperature exceeds 40°C.
- ELECTRON S.A. is not responsible for any accident or damage caused by incorrect installation or improper use of the equipment.

Any reproduction by means or whole of this user's manual in any way, is prohibited without the written consent of ELECTRON S.A.

ELECTRON S.A. reserves the right to change or alter any information contained in this manual without prior notice.

After installation

- Make sure that the Splitter is installed and connected properly.
- Do not use water to clean the Splitter.
- Do not use wet clothes to clean the Splitter during operation.
- To avoid danger, do not put flammable material near the Splitter.
- Do not try to open the Splitter. There is danger of electric-shock.
- Do not try to repair the unit yourself by opening the Splitter. The service should always be performed by a specialist.

Power supply Power consumption

- Single phase, 220-240V~50Hz.
- 14W.

Internal fuses

- Seven fuses 100mA each (5X20mm).

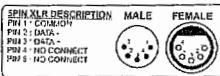
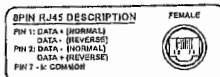
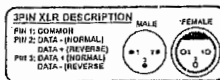
Output protection

Each output is optically isolated with separate fuse, transformer, DC power supply, opto coupler and buffer. This protects the DMX input against an eventual fault on any equipment connected to the splitter.

Output DMX signal

The input signal is buffered and each output can drive up to 32 DMX devices such as Dimmer Packs, moving heads or other DMX controlled units.

Pin connection



The SP-142 DMX SPLITTER offers:

- One DMX-512 input on a 5pin XLR male.
- Termination switch with LED indicator.
- One THROUGH output on a 5pin XLR female connector.
- Four optically isolated and buffered 5pin XLR outputs.
- Two optically isolated and buffered 3pin XLR outputs with reverse polarity switches.

The SP-142 DMX SPLITTER is also available with 3pin XLR or 5pin XLR or 8pin RJ45 connectors at all input and output signals.

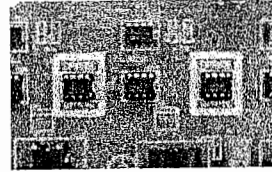
The pin connections are shown in the schemes on the left side.

NOTE: The green LED "DATA" illuminates if the received DMX-512 signal is correct.

Spare parts

The internal PCB carries two spare output ICs for fast emergency service. The spare ICs are clearly marked as shown in the photo below.

NOTE: The replacement of spare parts should be always realised by a qualified technician.



Rack mounting

The Splitter SP-142 is designed to be mounted on a standard 19" Rack (1U) but it can also be used as a desktop unit.

DIMENSIONS IN CM (WXDXH): 48,3X17X4,45

THE SPLITTER SP-142 IS CE APPROVED AND CONFORMS TO EN 60669-1/1995, EN, EN 61000-3-2/1995 AND EN 61000-4-2/1995.

TECHNICAL SPECIFICATIONS

5PIN XLR MALE INPUT
5PIN XLR FEMALE THROUGH
TERMINATION SWITCH WITH LED INDICATOR
4 OPTICALLY ISOLATED AND BUFFERED OUTPUTS ON 5PIN XLR FEMALES
2 OPTICALLY ISOLATED AND BUFFERED OUTPUTS ON 3PIN XLR FEMALES WITH REVERSE POLARITY BUTTONS
2 SPARE OUTPUT IC s
7 INDEPENDENT LOW-VOLTAGE POWER SUPPLIES
SINGLE PHASE, 220-240V~50Hz
7 FUSES 100mA EACH (5X20mm)
DATA LED
ALSO AVAILABLE WITH 3PIN XLR CONNECTORS AT ALL INPUT AND OUTPUT SIGNALS
DIMENSIONS IN CM (WxDxH): 48,3 X 17 X 4,45
CE APPROVED AND CONFORMS TO EN 60669-1/1995, EN 61000-3-2/1995, AND EN 61000-4-2/1995 STANDARDS



ELECTRON

ELECTRON S.A.

PROFESSIONAL LIGHTING SYSTEMS

68, ANTIOHIAS STR., N. PHILADELPHIA - 143 41 ATHENS - GREECE

Tel. +30 210 2584240 - FAX. +30 210 2584245

E-mail: info@electron.gr - Internet: <http://www.electron.gr>